

Dynamic Positioning and Control Systems

L-3 NMS6000 Integrated Vessel Control System



The NMS6000 Integrated Vessel Control System provides the latest in advanced ship control combining L-3 DP&CS' proven dynamic positioning systems and vessel monitoring systems for a reliable and industry-proven platform. Using modular components, each system can be configured with multiple operator stations, thruster controls, alarm and monitoring systems and power management systems for a complete vessel control solution designed to meet each customer's needs.

Available systems can provide:

- DP Class 0 - DP Class 3
- Thruster Control System- Primary and back-up stations with manual and auto operations
- Vessel Management System- Multiple operation stations configured for customer requirements
- Power Management System- Fully integrated upper level control
- Other customer applications to meet customer needs

The NMS6000 Integrated Vessel Control Systems are used in critical operations where operability and safety are of the utmost concern.



communications

Dynamic Positioning & Control Systems

www.L-3com.com/dpcs/

C³ISR > GOVERNMENT SERVICES > AM&M > SPECIALIZED PRODUCTS

This technical data and software is considered as Technology Software Publicly Available (TSPA) as defined in Export Administration Regulations (EAR) Part 734.7-11. Call for latest revision. All brand names and product names referenced are trademarks, registered trademarks, or trade names of their respective holders.

Dynamic Positioning and Controls Systems

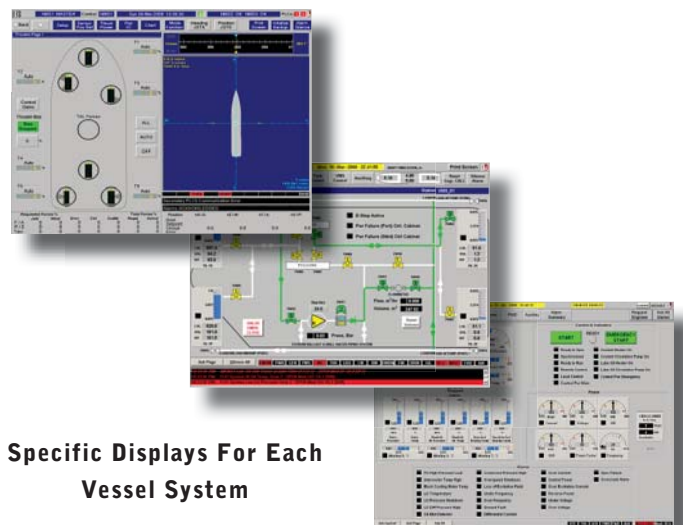
Proven Vessel Control and Monitoring Solutions

The Benefits

- Latest Type-Approved industry standard hardware –Active Matrix TFT LCD displays with touch screen and available integrated PCs provide high levels of performance, reliability and supportability.
- Flexible and scalable – Commercial-Off-The-Shelf hardware and software platforms provide a system that can be supplied at the appropriate level to meet current requirements but still easily adapt to growing customer needs.
- Network/server architecture – Using WINDOWS XP Server OS allows remote control and monitoring stations to be strategically placed throughout the vessel.
- Distributed control – Minimizes long cable runs, reducing shipboard cable costs and improving reliability.
- Integrated system – Standard network protocols including ModBus, RS232, RS422, RS485 allow data from a wide range of other manufacturers' systems to be easily integrated into the NMS6000.
- Flexible installation – A variety of hardware options available ranging from components for mounting in existing consoles to complete console arrangements custom designed by L-3 DP&CS.
- Regulatory compliance – NMS6000 systems meet all appropriate regulatory requirements.



Integrated Console



Specific Displays For Each Vessel System

Offices Worldwide

California

12131 Community Road
Poway, California 92064
USA

Tel: +1 858.679.5500
Fax: +1 858.679.5501

Texas

6610 W. Sam Houston
Pkwy North, Suite 300
Houston, Texas 77041

Tel: +1 713.880.2866
Fax: +1 713.880.2734



communications

Dynamic Positioning & Control Systems

www.L-3com.com/dpcs/

United Kingdom

Thainstone Business Center
Inverurie AB515TB
Scotland

Tel: + 44 (0) 1467.628919
Fax: + 44 (0) 1467.628958

Singapore

Shaw House #19-01
6350 Orchard Road
Singapore 238868

Tel: + 65 6333.8119
Fax: + 65 6333.8114