

# Dynamic Positioning and Controls Systems

## L-3 NMS6000 Alarm and Monitoring System



The L-3 NMS6000 modular platform provides the latest in advanced vessel controls. Each system can be custom tailored to meet customer requirements, ranging from entry level Alarm and Monitoring Systems (AMS) to complex Vessel Monitoring Systems (VMS).

Some of the key systems features are:

- Main Engines and Generators
- Thrusters and Auxiliaries
- Pump and Valve Controls
- Power Management
- Bilge and Ballast Controls
- Material Handling including Fuel, Air, Water, Mud and Dry Bulk Materials
- Environmental Conditions and Vessel Motions

These systems offer unlimited flexibility to interface with vessel systems such as bilge and ballast, cargo control and major machinery monitoring including propulsion and switchgear which provides both monitoring and control capabilities. Each installation is custom designed to meet specific vessel requirements. Mimic diagrams for each system monitored provide simple and intuitive user interaction. Watch Call and Patrolman alarm systems can easily be incorporated within the system. NMS6000 AMS/VMS systems can be designed to meet a variety of certifications ranging from simple automation systems to vessel certified for unmanned engine room operations. NMS6000 systems are in use in a wide range of applications from standard offshore support vessels to large drilling assets and even in land-based applications.



**communications**

**Dynamic Positioning & Control Systems**

C<sup>3</sup>ISR > GOVERNMENT SERVICES > AM&M > SPECIALIZED PRODUCTS

This technical data and software is considered as Technology Software Publicly Available (TSPA) as defined in Export Administration Regulations (EAR) Part 734.7-11. Call for latest revision. All brand names and product names referenced are trademarks, registered trademarks, or trade names of their respective holders.

# Dynamic Positioning and Controls Systems

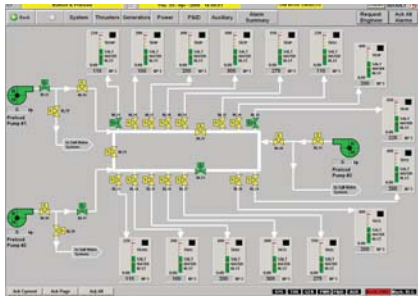
## Proven Vessel Control and Monitoring Solutions

### The Benefits

- Latest Type-Approved industry standard hardware – Active Matrix TFT LCD displays with touch screen and available integrated PCs provide high levels of performance, reliability and supportability.
- Flexible and scalable – Commercial-Off-The-Shelf hardware and software platforms provide a system that can be supplied at the appropriate level to meet current requirements but still easily adapt to growing customer needs.
- Network/server architecture – Using WINDOWS XP Server OS allows remote control and monitoring stations to be strategically placed throughout the vessel.
- Distributed control – Minimizes long cable runs, reducing shipboard cable costs and improving reliability.
- Integrated system – Standard network protocols including ModBus, RS232, RS422, RS485 allow data from a wide range of other manufacturers' systems to be easily integrated into the NMS6000.
- Flexible installation – A variety of hardware options available ranging from components for mounting in existing consoles to complete console arrangements custom designed by L-3 DP&CS.
- Regulatory compliance – NMS6000 systems meet all appropriate regulatory requirements.



Workstation Components



Dedicated Displays For Each Monitored System

## Offices Worldwide

### California

12131 Community Road  
Poway, California 92064  
USA

Tel: +1 858.679.5500  
Fax: +1 858.679.5501

### Texas

6610 W. Sam Houston  
Pkwy North, Suite 300  
Houston, Texas 77041

Tel: +1 713.880.2866  
Fax: +1 713.880.2734

### United Kingdom

Thainstone Business Center  
Inverurie AB515TB  
Scotland

Tel: + 44 (0) 1467.628919  
Fax: + 44 (0) 1467.628958



**communications**

**Dynamic Positioning & Control Systems**

[www.L-3com.com/dpcs/](http://www.L-3com.com/dpcs/)

### Singapore

Shaw House #19-01  
6350 Orchard Road  
Singapore 238868

Tel: + 65 6333.8119  
Fax: + 65 6333.8114